



Test Report

Applicant : Shenzhen Huafurui Technology Co., Ltd.
Address : Unit 601-03, 6/F, Block A, Building 1, Ganfeng Technology Building, No. 993
Jiaxian Road, Xiangjiaotang Community, Bantian Street, Longgang
District, Shenzhen, P.R. China

Report on the submitted samples said to be:

Sample Name(s) : Smartphone
Trade Mark : CUBOT
Part No. : KINGKONG AX
Sample Received Date : December 18, 2023
Testing Period : December 18, 2023 ~ December 21, 2023
Date of Report : December 22, 2023
Testing Location : 901, No.40 Building, Xialang Industrial Zone, Heshuikou Community,
Matian Street, Guangming District, Shenzhen, Guangdong, China
Results : Please refer to next page(s).

TEST REQUEST	CONCLUSION
As specified by client, based on the performed tests on submitted sample, the result of Lead(Pb), Cadmium(Cd), Mercury(Hg), Hexavalent Chromium(Cr(VI)), PBBs, PBDEs, Dibutyl Phthalate(DBP), Butylbenzyl Phthalate(BBP), Di-2-ethylhexyl Phthalate(DEHP) and Diisobutyl phthalate(DIBP) content comply with the limits set by RoHS Directive 2011/65/EU with amendment (EU) 2015/863.	PASS

Signed for and on behalf of LCS

Terry Luo



**A. EU RoHS Directive 2011/65/EU and its amendment directives**

Test method: Refer to IEC 62321-1:2013&IEC 62321-2:2021&IEC 62321-3-1:2013, Screening by X-ray Fluorescence Spectroscopy (XRF).

Test result(s):

Sample No.	Sample Description	Screening Result(s)						Date of sample submission/ Resubmission
		Cd	Pb	Hg	Cr [▼]	Br [▼]		
						PBBs	PBDEs	
1	Black glass screen	BL	BL	BL	BL	BL	BL	2023-12-18
2	Transparent plastic board	BL	BL	BL	BL	BL	BL	2023-12-18
3	Silver plastic sheet	BL	BL	BL	BL	BL	BL	2023-12-18
4	Transparent plastic sheet	BL	BL	BL	BL	BL	BL	2023-12-18
5	White plastic sheet	BL	BL	BL	BL	BL	BL	2023-12-18
6	White plastic frame	BL	BL	BL	BL	BL	BL	2023-12-18
7	Silver metal plate	BL	BL	BL	BL	/	/	2023-12-18
8	Silver gray cotton glue	BL	BL	BL	BL	BL	BL	2023-12-18
9	Black tape	BL	BL	BL	BL	BL	BL	2023-12-18
10	Black FPC	BL	BL	BL	BL	BL	BL	2023-12-18
11	Black cotton sheet	BL	BL	BL	BL	BL	BL	2023-12-18
12	White plastic LED light	BL	BL	BL	BL	BL	BL	2023-12-18
13	Black plastic shell	BL	BL	BL	BL	BL	BL	2023-12-18
14	Black foam	BL	BL	BL	BL	BL	BL	2023-12-18
15	Black tempered glass	BL	BL	BL	BL	BL	BL	2023-12-18
16	Gold metal nut	BL	BL	BL	BL	/	/	2023-12-18
17	Silver adhesive tape	BL	BL	BL	BL	BL	BL	2023-12-18
18	Silver metal sheet	BL	BL	BL	BL	/	/	2023-12-18
19	Black FPC	BL	BL	BL	BL	BL	BL	2023-12-18
20	Black foam block	BL	BL	BL	BL	BL	BL	2023-12-18
21	White colloid	BL	BL	BL	BL	BL	BL	2023-12-18
22	Black metal mesh	BL	BL	BL	BL	/	/	2023-12-18
23	Black glass inner screen	BL	BL	BL	BL	BL	BL	2023-12-18
24	Transparent plastic board	BL	BL	BL	BL	BL	BL	2023-12-18
25	Silver plastic sheet	BL	BL	BL	BL	BL	BL	2023-12-18
26	White plastic sheet	BL	BL	BL	BL	BL	BL	2023-12-18
27	Transparent plastic sheet	BL	BL	BL	BL	BL	BL	2023-12-18



Shenzhen LCS Compliance Testing Laboratory Ltd.

Add: 901, No.40 Building, Xialang Industrial Zone, Heshuikou Community, Matian Street, Guangming District, Shenzhen, Guangdong, China

Tel: +(86) 0755-82591330 | E-mail: webmaster@lcs-cert.com | Web: www.lcs-cert.com

Scan code to check authenticity



Sample No.	Sample Description	Screening Result(s)						Date of sample submission/ Resubmission
		Cd	Pb	Hg	Cr ^v	Br ^v		
						PBBs	PBDEs	
28	Black plastic interface	BL	BL	BL	BL	BL	BL	2023-12-18
29	Gold metal contacts	BL	BL	BL	BL	/	/	2023-12-18
30	Black plastic frame	BL	BL	BL	BL	BL	BL	2023-12-18
31	Pink colloid	BL	BL	BL	BL	BL	BL	2023-12-18
32	Silver gray metal plate	BL	BL	BL	BL	/	/	2023-12-18
33	Copper colored metal shell	BL	BL	BL	BL	/	/	2023-12-18
34	Gray metal frame	BL	BL	BL	BL	/	/	2023-12-18
35	Gray metal frame	BL	BL	BL	BL	/	/	2023-12-18
36	Black plastic board	BL	BL	BL	BL	BL	BL	2023-12-18
37	Gold metal stylus	BL	BL	BL	BL	/	/	2023-12-18
38	Yellow plastic LED light	BL	BL	BL	BL	BL	BL	2023-12-18
39	Black plastic sheet	BL	BL	BL	BL	BL	BL	2023-12-18
40	Transparent plastic block	BL	BL	BL	BL	BL	BL	2023-12-18
41	Black plastic block	BL	BL	BL	BL	BL	BL	2023-12-18
42	Silver metal sheet	BL	BL	BL	BL	/	/	2023-12-18
43	Gray metal buttons	BL	BL	BL	BL	/	/	2023-12-18
44	Black metal sheet	BL	BL	BL	BL	/	/	2023-12-18
45	Black rubber sheet	BL	BL	BL	BL	BL	BL	2023-12-18
46	Black plastic frame	BL	BL	BL	BL	BL	BL	2023-12-18
47	Silver metal sheet	BL	BL	BL	BL	/	/	2023-12-18
48	Black FPC	BL	BL	BL	BL	BL	BL	2023-12-18
49	Black plastic interface	BL	BL	BL	BL	BL	BL	2023-12-18
50	Gold metal contacts	BL	BL	BL	BL	/	/	2023-12-18
51	Silver metal screw	BL	BL	BL	BL	/	/	2023-12-18
52	Silver metal screw	BL	BL	BL	BL	/	/	2023-12-18
53	Black metal screws	BL	BL	BL	BL	/	/	2023-12-18
54	Black metal screws	BL	BL	BL	BL	/	/	2023-12-18
55	Black plastic wire leather	BL	BL	BL	BL	BL	BL	2023-12-18
56	Gold metal head	BL	BL	BL	BL	/	/	2023-12-18
57	Silver plastic sheet	BL	BL	BL	BL	BL	BL	2023-12-18
58	Transparent film	BL	BL	BL	BL	BL	BL	2023-12-18
59	Copper metal coil	BL	BL	BL	BL	/	/	2023-12-18
60	Black plastic frame	BL	BL	BL	BL	BL	BL	2023-12-18



Shenzhen LCS Compliance Testing Laboratory Ltd.

Add: 901, No.40 Building, Xialang Industrial Zone, Heshuikou Community, Matian Street, Guangming District, Shenzhen, Guangdong, China

Tel: +(86) 0755-82591330 | E-mail: webmaster@lcs-cert.com | Web: www.lcs-cert.com

Scan code to check authenticity



Sample No.	Sample Description	Screening Result(s)						Date of sample submission/ Resubmission
		Cd	Pb	Hg	Cr [▼]	Br [▼]		
						PBBs	PBDEs	
61	Silver metal frame	BL	BL	BL	BL	/	/	2023-12-18
62	Silver metal sheet	BL	BL	BL	BL	/	/	2023-12-18
63	Silver metal magnet	BL	BL	BL	BL	/	/	2023-12-18
64	Red plastic wire skin	BL	BL	BL	BL	BL	BL	2023-12-18
65	Black plastic wire leather	BL	BL	BL	BL	BL	BL	2023-12-18
66	Silver metal wire core	BL	BL	BL	BL	/	/	2023-12-18
67	Silver metal shell	BL	BL	BL	BL	/	/	2023-12-18
68	Black plastic shell	BL	BL	BL	BL	BL	BL	2023-12-18
69	Black film circle	BL	BL	BL	BL	BL	BL	2023-12-18
70	Black plastic ring	BL	BL	BL	BL	BL	BL	2023-12-18
71	Transparent plastic sheet	BL	BL	BL	BL	BL	BL	2023-12-18
72	Copper metal coil	BL	BL	BL	BL	/	/	2023-12-18
73	Silver metal ring	BL	BL	BL	BL	/	/	2023-12-18
74	Silver metal magnet	BL	BL	BL	BL	/	/	2023-12-18
75	Color photosensitive film	BL	BL	BL	BL	BL	BL	2023-12-18
76	Silver metal sheet	BL	BL	BL	BL	/	/	2023-12-18
77	Black plastic interface	BL	BL	BL	BL	BL	BL	2023-12-18
78	Gold metal contacts	BL	BL	BL	BL	/	/	2023-12-18
79	Yellow FPC	BL	BL	BL	BL	BL	BL	2023-12-18
80	Silver metal body	BL	BL	BL	BL	/	/	2023-12-18
81	Black plastic shell	BL	BL	BL	BL	BL	BL	2023-12-18
82	Transparent plastic sheet	BL	BL	BL	BL	BL	BL	2023-12-18
83	Black plastic ring	BL	BL	BL	BL	BL	BL	2023-12-18
84	Black film circle	BL	BL	BL	BL	BL	BL	2023-12-18
85	Blue glass	BL	BL	BL	BL	BL	BL	2023-12-18
86	Color photosensitive film	BL	BL	BL	BL	BL	BL	2023-12-18
87	Black rubber sheet	BL	BL	BL	BL	BL	BL	2023-12-18
88	Silver metal shell	BL	BL	BL	BL	/	/	2023-12-18
89	Silver metal magnetic coil	BL	BL	BL	BL	/	/	2023-12-18
90	White plastic sheet	BL	BL	BL	BL	BL	BL	2023-12-18
91	Silver metal block	BL	BL	BL	BL	/	/	2023-12-18
92	Golden metal ring	BL	BL	BL	BL	/	/	2023-12-18



Shenzhen LCS Compliance Testing Laboratory Ltd.

Add: 901, No.40 Building, Xialang Industrial Zone, Heshuikou Community, Matian Street, Guangming District, Shenzhen, Guangdong, China

Tel: +(86) 0755-82591330 | E-mail: webmaster@lcs-cert.com | Web: www.lcs-cert.com

Scan code to check authenticity



Sample No.	Sample Description	Screening Result(s)						Date of sample submission/ Resubmission
		Cd	Pb	Hg	Cr [▼]	Br [▼]		
						PBBs	PBDEs	
93	Green plastic PCB	BL	BL	BL	BL	BL	BL	2023-12-18
94	Copper metal coil	BL	BL	BL	BL	/	/	2023-12-18
95	Red plastic wire skin	BL	BL	BL	BL	BL	BL	2023-12-18
96	Blue plastic wire skin	BL	BL	BL	BL	BL	BL	2023-12-18
97	Silver metal shell	BL	BL	BL	BL	/	/	2023-12-18
98	Black plastic block	BL	BL	BL	BL	BL	BL	2023-12-18
99	Gold metal stylus	BL	BL	BL	BL	/	/	2023-12-18
100	Green plastic PCB	BL	BL	BL	BL	BL	BL	2023-12-18
101	Silver metal contacts	BL	BL	BL	BL	/	/	2023-12-18
102	Black plastic chip	BL	BL	BL	BL	BL	BL	2023-12-18
103	Black plastic patch resistor	BL	BL	BL	BL	BL	BL	2023-12-18
104	Silver metal solder	BL	BL	BL	BL	/	/	2023-12-18
105	Brown plastic patch capacitor	BL	BL	BL	BL	BL	BL	2023-12-18
106	Black plastic interface	BL	BL	BL	BL	BL	BL	2023-12-18
107	Gold metal contacts	BL	BL	BL	BL	/	/	2023-12-18
108	Black plastic sheet	BL	BL	BL	BL	BL	BL	2023-12-18
109	Grey plastic interface	BL	BL	BL	BL	BL	BL	2023-12-18
110	Silver metal contacts	BL	BL	BL	BL	/	/	2023-12-18
111	Silver metal cover	BL	BL	BL	BL	/	/	2023-12-18
112	Copper colored metal aluminum foil	BL	BL	BL	BL	/	/	2023-12-18
113	Yellow tape	BL	BL	BL	BL	BL	BL	2023-12-18
114	Silver metal body	BL	BL	BL	BL	/	/	2023-12-18
115	Silver metal sheet	BL	BL	BL	BL	/	/	2023-12-18
116	Black plastic base	BL	BL	BL	BL	BL	BL	2023-12-18
117	Gold metal contacts	BL	BL	BL	BL	/	/	2023-12-18
118	Silver metal contacts	BL	BL	BL	BL	/	/	2023-12-18
119	Black plastic PCB	BL	BL	BL	BL	BL	BL	2023-12-18
120	Black plastic block	BL	BL	BL	BL	BL	BL	2023-12-18
121	White plastic shell	BL	BL	BL	BL	BL	BL	2023-12-18
122	Black cloth mesh	BL	BL	BL	BL	BL	BL	2023-12-18
123	Silver metal shell	BL	BL	BL	BL	/	/	2023-12-18
124	Transparent film	BL	BL	BL	BL	BL	BL	2023-12-18
125	Copper metal coil	BL	BL	BL	BL	/	/	2023-12-18
126	Silver metal shell	BL	BL	BL	BL	/	/	2023-12-18



Shenzhen LCS Compliance Testing Laboratory Ltd.

Add: 901, No.40 Building, Xialang Industrial Zone, Heshuikou Community, Matian Street, Guangming District, Shenzhen, Guangdong, China

Tel: +(86) 0755-82591330 | E-mail: webmaster@lcs-cert.com | Web: www.lcs-cert.com

Scan code to check authenticity



Sample No.	Sample Description	Screening Result(s)						Date of sample submission/ Resubmission
		Cd	Pb	Hg	Cr ^{VI}	Br ^{VI}		
						PBBs	PBDEs	
127	Silver metal magnet	BL	BL	BL	BL	/	/	2023-12-18
128	Green plastic PCB	BL	BL	BL	BL	BL	BL	2023-12-18
129	Silver metal solder	BL	BL	BL	BL	/	/	2023-12-18
130	White plastic outer line leather	BL	BL	BL	BL	BL	BL	2023-12-18
131	Gold metal enameled wire	BL	BL	BL	BL	/	/	2023-12-18
132	Green metal enameled wire	BL	BL	BL	BL	/	/	2023-12-18
133	White plastic shell	BL	BL	BL	BL	BL	BL	2023-12-18
134	Silver metal body	BL	BL	BL	BL	/	/	2023-12-18
135	Blue plastic PCB	BL	BL	BL	BL	BL	BL	2023-12-18
136	Silver metal solder	BL	BL	BL	BL	/	/	2023-12-18
137	Black plastic patch resistor	BL	BL	BL	BL	BL	BL	2023-12-18
138	Silver metal shrapnel	BL	BL	BL	BL	/	/	2023-12-18
139	White soft rubber	BL	BL	BL	BL	BL	BL	2023-12-18
140	Black plastic shell	BL	BL	BL	BL	BL	BL	2023-12-18
141	Silver metal sheet	BL	BL	BL	BL	/	/	2023-12-18
142	Silver metal stylus	BL	BL	BL	BL	/	/	2023-12-18
143	Blue plastic PCB	BL	BL	BL	BL	BL	BL	2023-12-18
144	Silver metal solder	BL	BL	BL	BL	/	/	2023-12-18
145	Silver battery body	BL	BL	BL	BL	BL	BL	2023-12-18

Note:

- Results were obtained by XRF for primary screening, and further chemical testing by ICP(for Cd, Pb, Hg), UV-Vis(for Cr(VI)) and GC-MS(for PBBs, PBDEs) are recommended to be performed, if the concentration exceeds the below warning value according to IEC 62321-3-1:2013(Unit: mg/kg).





Element	Polymers	Metals	Composite material
Cd	$BL \leq (70-3\sigma) < X < (130+3\sigma) \leq OL$	$BL \leq (70-3\sigma) < X < (130+3\sigma) \leq OL$	$LOD < X < (150+3\sigma) \leq OL$
Pb	$BL \leq (700-3\sigma) < X < (1300+3\sigma) \leq OL$	$BL \leq (700-3\sigma) < X < (1300+3\sigma) \leq OL$	$BL \leq (500-3\sigma) < X < (1500+3\sigma) \leq OL$
Hg	$BL \leq (700-3\sigma) < X < (1300+3\sigma) \leq OL$	$BL \leq (700-3\sigma) < X < (1300+3\sigma) \leq OL$	$BL \leq (500-3\sigma) < X < (1500+3\sigma) \leq OL$
Cr	$BL \leq (700-3\sigma) < X$	$BL \leq (700-3\sigma) < X$	$BL \leq (500-3\sigma) < X$
Br	$BL \leq (300-3\sigma) < X$	N/A	$BL \leq (250-3\sigma) < X$

Remark:

- BL= Below Limit
 - OL= Over Limit
 - X= The range of needing to do further testing
 - 3σ = The reproducibility of analytical instruments
 - N/A= Not applicable
 - LOD= Detection limit
2. The XRF screening test for RoHS elements – The reading may be different to the actual content in the sample be of non-uniformity composition.
 3. The maximum permissible limit is quoted from the document RoHS Directive 2011/65/EU with amendment (EU) 2015/863.
 4. ▼=For restricted substances PBBs and PBDEs, the results show the total Br content, the restricted substance was Cr(VI), and the results showed the total Cr content.

RoHS Restricted Substances	Maximum Concentration Value (mg/kg) (by weight in homogenous materials)
Cadmium(Cd)	100
Lead(Pb)	1000
Mercury(Hg)	1000
Hexavalent Chromium(Cr(VI))	1000
Polybrominated biphenyls(PBBs)	1000
Polybrominated diphenylethers(PBDEs)	1000
Dibutyl Phthalate(DBP)	1000
Butylbenzyl Phthalate(BBP)	1000
Di-(2-ethylhexyl) Phthalate(DEHP)	1000
Diisobutyl phthalate(DIBP)	1000

Disclaimers:

This XRF Screening report is for reference purposes only. The applicant shall make its/his/her own judgment as to whether the information provided in this XRF screening report is sufficient for its/his/her purposes. The result shown in this XRF screening report will differ based on various factors, including but not limited to, the sample size, thickness, area, surface flatness, equipment parameters and matrix effect (e.g. plastic, rubber, metal, glass, ceramic etc.). Further wet chemical pre-treatment with relevant chemical equipment analysis are required to obtain quantitative data.





B. EU RoHS Directive 2011/65/EU with amendment (EU) 2015/863 on Lead(Pb), Cadmium(Cd), Mercury(Hg), Hexavalent Chromium(Cr(VI)), PBBs, PBDEs, DBP, BBP, DEHP & DIBP content

Test method:

Lead(Pb) & Cadmium(Cd) Content:

Refer to IEC 62321-5:2013, by acid digestion and analysis was performed by inductively coupled plasma optical emission spectrometer (ICP-OES) or atomic absorption spectrometer (AAS).

Mercury(Hg) Content:

Refer to IEC 62321-4:2013+AMD1:2017 CSV, by acid digestion and analysis was performed by inductively coupled plasma optical emission spectrometer (ICP-OES).

Hexavalent Chromium(Cr(VI)) Content:

Refer to IEC 62321-7-1:2015 or IEC 62321-7-2:2017, analysis was performed by UV-visible spectrophotometer (UV-Vis).

PBBs & PBDEs Content:

Refer to IEC 62321-6:2015, by solvent extraction and analysis was performed by gas chromatography-mass spectrometer (GC-MS).

Phthalates(DBP, BBP, DEHP & DIBP) Content:

Refer to IEC 62321-8:2017, by solvent extraction and analysis was performed by gas chromatography-mass spectrometer (GC-MS).

Test result(s):

1) Phthalates(DBP, BBP, DEHP & DIBP)

Tested Item(s)	MDL (mg/kg)	Test Result(s) (mg/kg)				Limit (mg/kg)
		(1)	(13)	(23)	(45)	
Dibutyl Phthalate(DBP) Content	50	N.D.	N.D.	N.D.	N.D.	1000
Butylbenzyl Phthalate(BBP) Content	50	N.D.	N.D.	N.D.	N.D.	1000
Di-(2-ethylhexyl) Phthalate(DEHP) Content	50	N.D.	N.D.	N.D.	N.D.	1000
Diisobutyl phthalate(DIBP) Content	50	N.D.	N.D.	N.D.	N.D.	1000

Tested Item(s)	MDL (mg/kg)	Test Result(s) (mg/kg)					Limit (mg/kg)
		(55)	(64)	(65)	(87)	(95)	
Dibutyl Phthalate(DBP) Content	50	N.D.	N.D.	N.D.	N.D.	N.D.	1000
Butylbenzyl Phthalate(BBP) Content	50	N.D.	N.D.	N.D.	N.D.	N.D.	1000
Di-(2-ethylhexyl) Phthalate(DEHP) Content	50	N.D.	N.D.	N.D.	N.D.	N.D.	1000
Diisobutyl phthalate(DIBP) Content	50	N.D.	N.D.	N.D.	N.D.	N.D.	1000





Tested Item(s)	MDL (mg/kg)	Test Result(s) (mg/kg)					Limit (mg/kg)
		(96)	(121)	(130)	(133)	(139)	
Dibutyl Phthalate(DBP) Content	50	N.D.	N.D.	N.D.	N.D.	N.D.	1000
Butylbenzyl Phthalate(BBP) Content	50	N.D.	N.D.	N.D.	N.D.	N.D.	1000
Di-(2-ethylhexyl) Phthalate(DEHP) Content	50	N.D.	N.D.	N.D.	N.D.	N.D.	1000
Diisobutyl phthalate(DIBP) Content	50	N.D.	N.D.	N.D.	N.D.	N.D.	1000

Tested Item(s)	MDL (mg/kg)	Test Result(s) (mg/kg)	Limit (mg/kg)
		(2+3+4+5+6+8)	
Dibutyl Phthalate(DBP) Content	50	N.D.	1000
Butylbenzyl Phthalate(BBP) Content	50	N.D.	1000
Di-(2-ethylhexyl) Phthalate(DEHP) Content	50	N.D.	1000
Diisobutyl phthalate(DIBP) Content	50	N.D.	1000

Tested Item(s)	MDL (mg/kg)	Test Result(s) (mg/kg)	Limit (mg/kg)
		(9+10+11+12+14+15)	
Dibutyl Phthalate(DBP) Content	50	N.D.	1000
Butylbenzyl Phthalate(BBP) Content	50	N.D.	1000
Di-(2-ethylhexyl) Phthalate(DEHP) Content	50	N.D.	1000
Diisobutyl phthalate(DIBP) Content	50	N.D.	1000

Tested Item(s)	MDL (mg/kg)	Test Result(s) (mg/kg)	Limit (mg/kg)
		(17+19+20+21+24+25)	
Dibutyl Phthalate(DBP) Content	50	N.D.	1000
Butylbenzyl Phthalate(BBP) Content	50	N.D.	1000
Di-(2-ethylhexyl) Phthalate(DEHP) Content	50	N.D.	1000
Diisobutyl phthalate(DIBP) Content	50	N.D.	1000





Tested Item(s)	MDL (mg/kg)	Test Result(s) (mg/kg)	Limit (mg/kg)
		(26+27+28+30+31+36)	
Dibutyl Phthalate(DBP) Content	50	N.D.	1000
Butylbenzyl Phthalate(BBP) Content	50	N.D.	1000
Di-(2-ethylhexyl) Phthalate(DEHP) Content	50	N.D.	1000
Diisobutyl phthalate(DIBP) Content	50	N.D.	1000

Tested Item(s)	MDL (mg/kg)	Test Result(s) (mg/kg)	Limit (mg/kg)
		(38+39+40+41+46+48)	
Dibutyl Phthalate(DBP) Content	50	N.D.	1000
Butylbenzyl Phthalate(BBP) Content	50	N.D.	1000
Di-(2-ethylhexyl) Phthalate(DEHP) Content	50	N.D.	1000
Diisobutyl phthalate(DIBP) Content	50	N.D.	1000

Tested Item(s)	MDL (mg/kg)	Test Result(s) (mg/kg)	Limit (mg/kg)
		(49+57+58+60+68+69)	
Dibutyl Phthalate(DBP) Content	50	N.D.	1000
Butylbenzyl Phthalate(BBP) Content	50	N.D.	1000
Di-(2-ethylhexyl) Phthalate(DEHP) Content	50	N.D.	1000
Diisobutyl phthalate(DIBP) Content	50	N.D.	1000

Tested Item(s)	MDL (mg/kg)	Test Result(s) (mg/kg)	Limit (mg/kg)
		(70+71+75+77+79+81)	
Dibutyl Phthalate(DBP) Content	50	N.D.	1000
Butylbenzyl Phthalate(BBP) Content	50	N.D.	1000
Di-(2-ethylhexyl) Phthalate(DEHP) Content	50	N.D.	1000
Diisobutyl phthalate(DIBP) Content	50	N.D.	1000





Tested Item(s)	MDL (mg/kg)	Test Result(s) (mg/kg)	Limit (mg/kg)
		(82+83+84+85+86+90)	
Dibutyl Phthalate(DBP) Content	50	N.D.	1000
Butylbenzyl Phthalate(BBP) Content	50	N.D.	1000
Di-(2-ethylhexyl) Phthalate(DEHP) Content	50	N.D.	1000
Diisobutyl phthalate(DIBP) Content	50	N.D.	1000

Tested Item(s)	MDL (mg/kg)	Test Result(s) (mg/kg)	Limit (mg/kg)
		(93+98+100+102+103+105)	
Dibutyl Phthalate(DBP) Content	50	N.D.	1000
Butylbenzyl Phthalate(BBP) Content	50	N.D.	1000
Di-(2-ethylhexyl) Phthalate(DEHP) Content	50	N.D.	1000
Diisobutyl phthalate(DIBP) Content	50	N.D.	1000

Tested Item(s)	MDL (mg/kg)	Test Result(s) (mg/kg)	Limit (mg/kg)
		(106+108+109+113+116+119)	
Dibutyl Phthalate(DBP) Content	50	N.D.	1000
Butylbenzyl Phthalate(BBP) Content	50	N.D.	1000
Di-(2-ethylhexyl) Phthalate(DEHP) Content	50	N.D.	1000
Diisobutyl phthalate(DIBP) Content	50	N.D.	1000

Tested Item(s)	MDL (mg/kg)	Test Result(s) (mg/kg)	Limit (mg/kg)
		(120+122+124+128+135+137)	
Dibutyl Phthalate(DBP) Content	50	N.D.	1000
Butylbenzyl Phthalate(BBP) Content	50	N.D.	1000
Di-(2-ethylhexyl) Phthalate(DEHP) Content	50	N.D.	1000
Diisobutyl phthalate(DIBP) Content	50	N.D.	1000





Tested Item(s)	MDL (mg/kg)	Test Result(s) (mg/kg)	Limit (mg/kg)
		(140+143+145)	
Dibutyl Phthalate(DBP) Content	50	N.D.	1000
Butylbenzyl Phthalate(BBP) Content	50	N.D.	1000
Di-(2-ethylhexyl) Phthalate(DEHP) Content	50	N.D.	1000
Diisobutyl phthalate(DIBP) Content	50	N.D.	1000

Note:

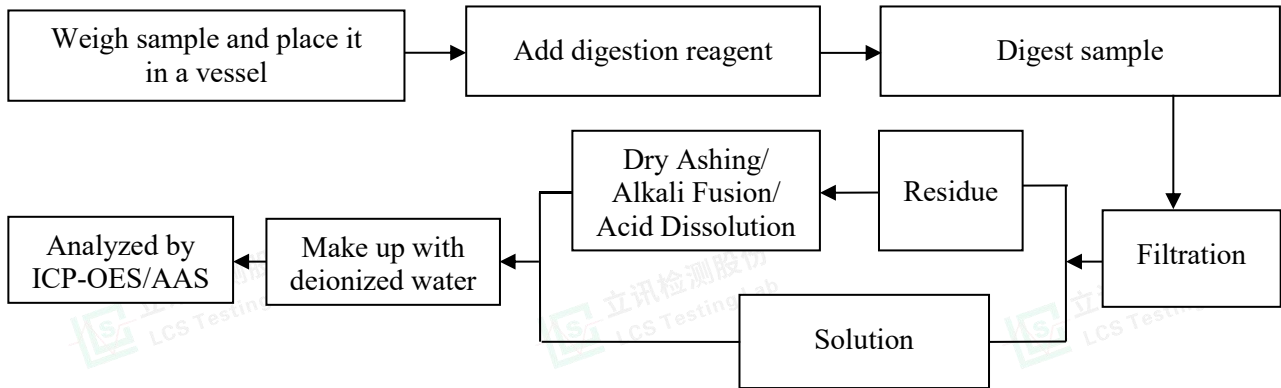
- MDL = Method Detection Limit
- N.D. = Not Detected (<MDL)
- mg= milligram
- According to customer's requirement, only the appointed materials have been tested.



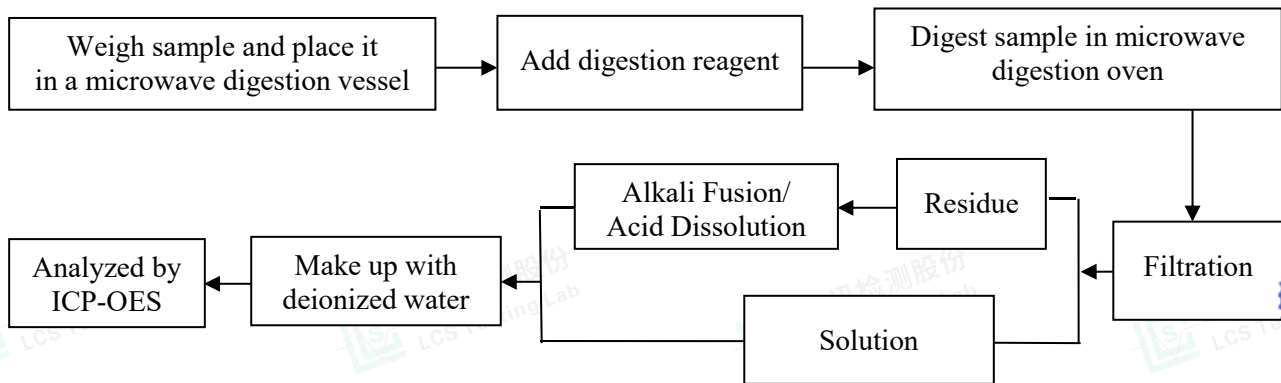


Test Process

1. Lead(Pb) & Cadmium(Cd): IEC 62321-5:2013

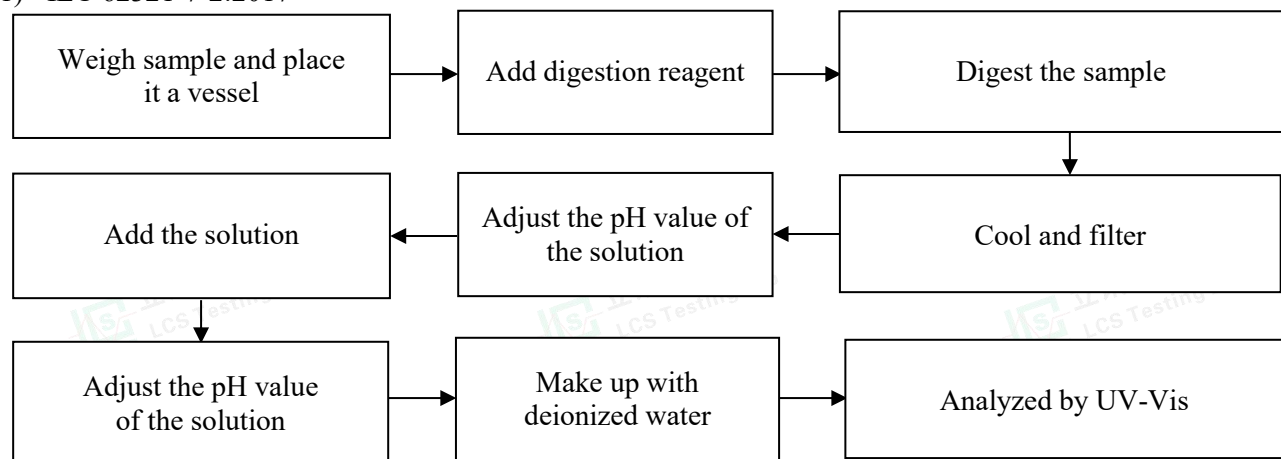


2. Mercury(Hg): IEC 62321-4:2013+AMD1:2017 CSV



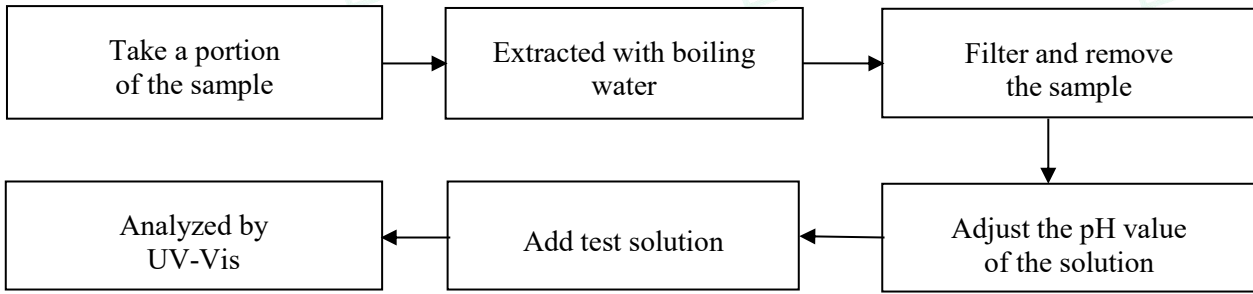
3. Hexavalent Chromium(Cr(VI))

1) IEC 62321-7-2:2017

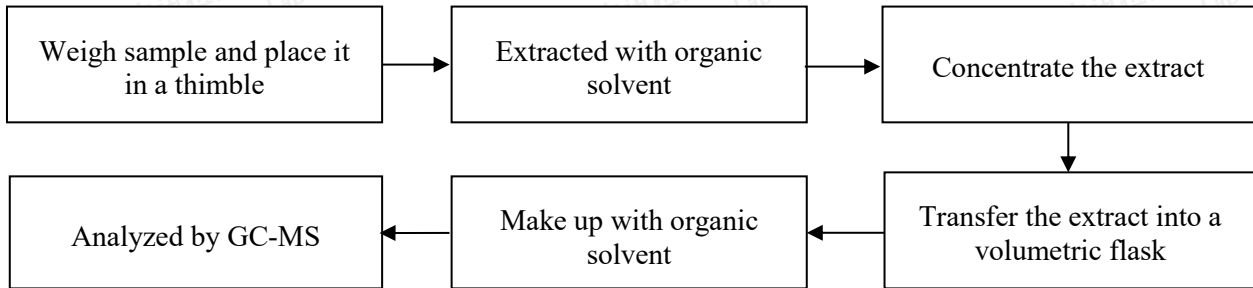




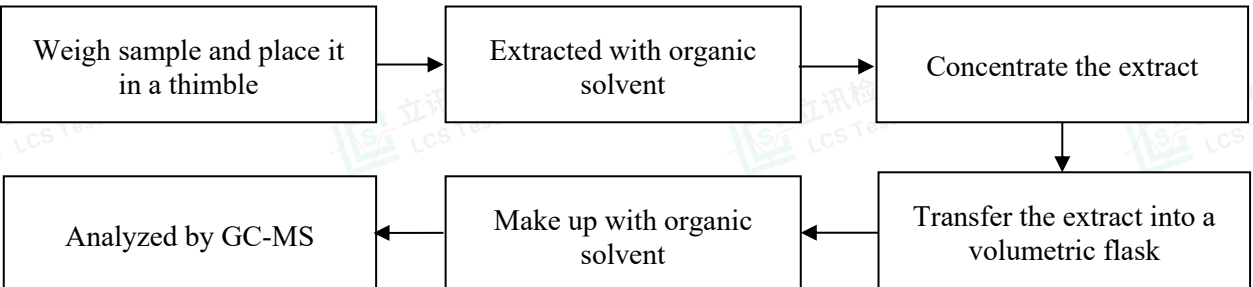
2) IEC 62321-7-1:2015



4. Polybrominated Biphenyls(PBBs) & Polybrominated Diphenyl Ethers(PBDEs) : IEC 62321-6:2015



5. Phthalates(DBP, BBP, DEHP & DIBP) : IEC 62321-8:2017

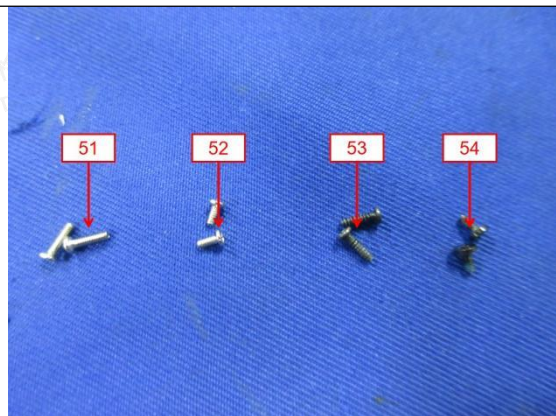
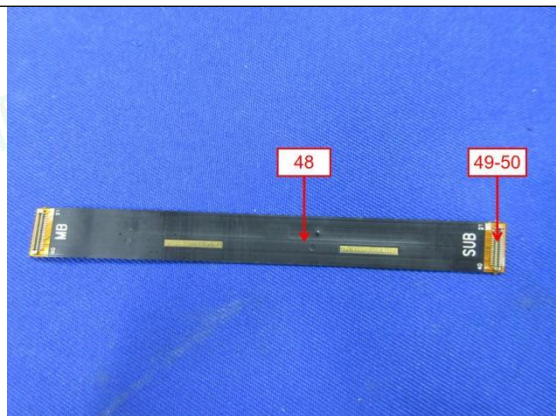
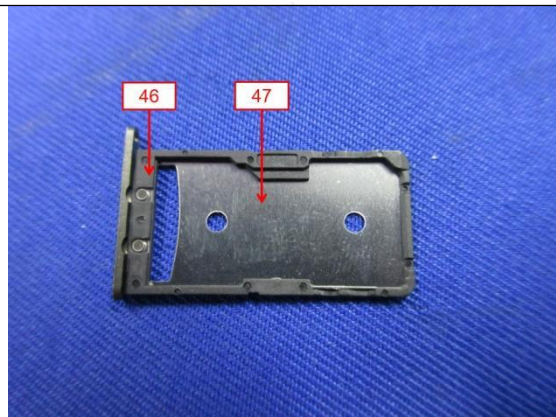
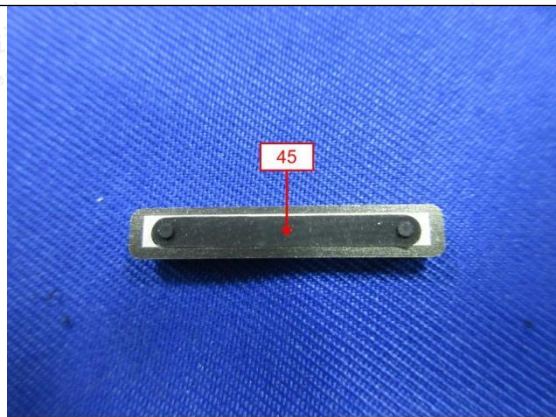
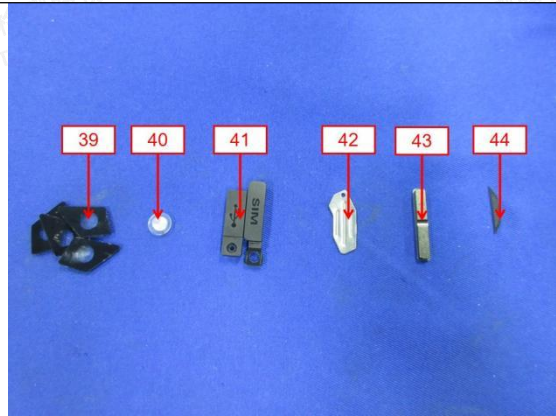
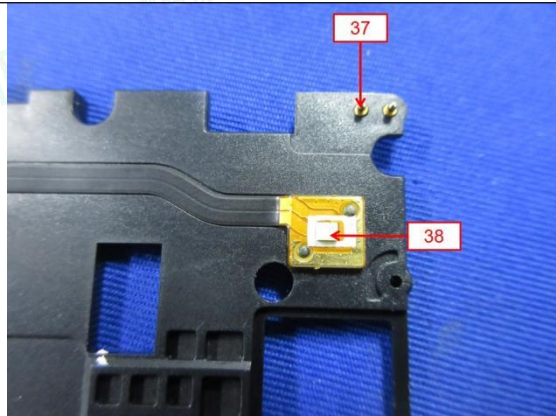
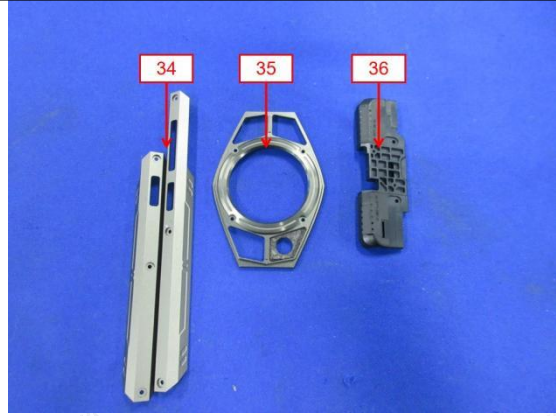
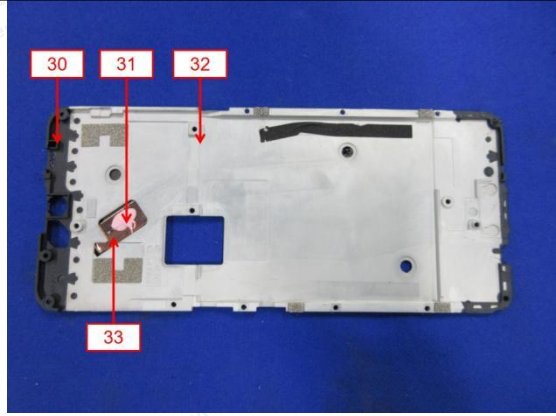


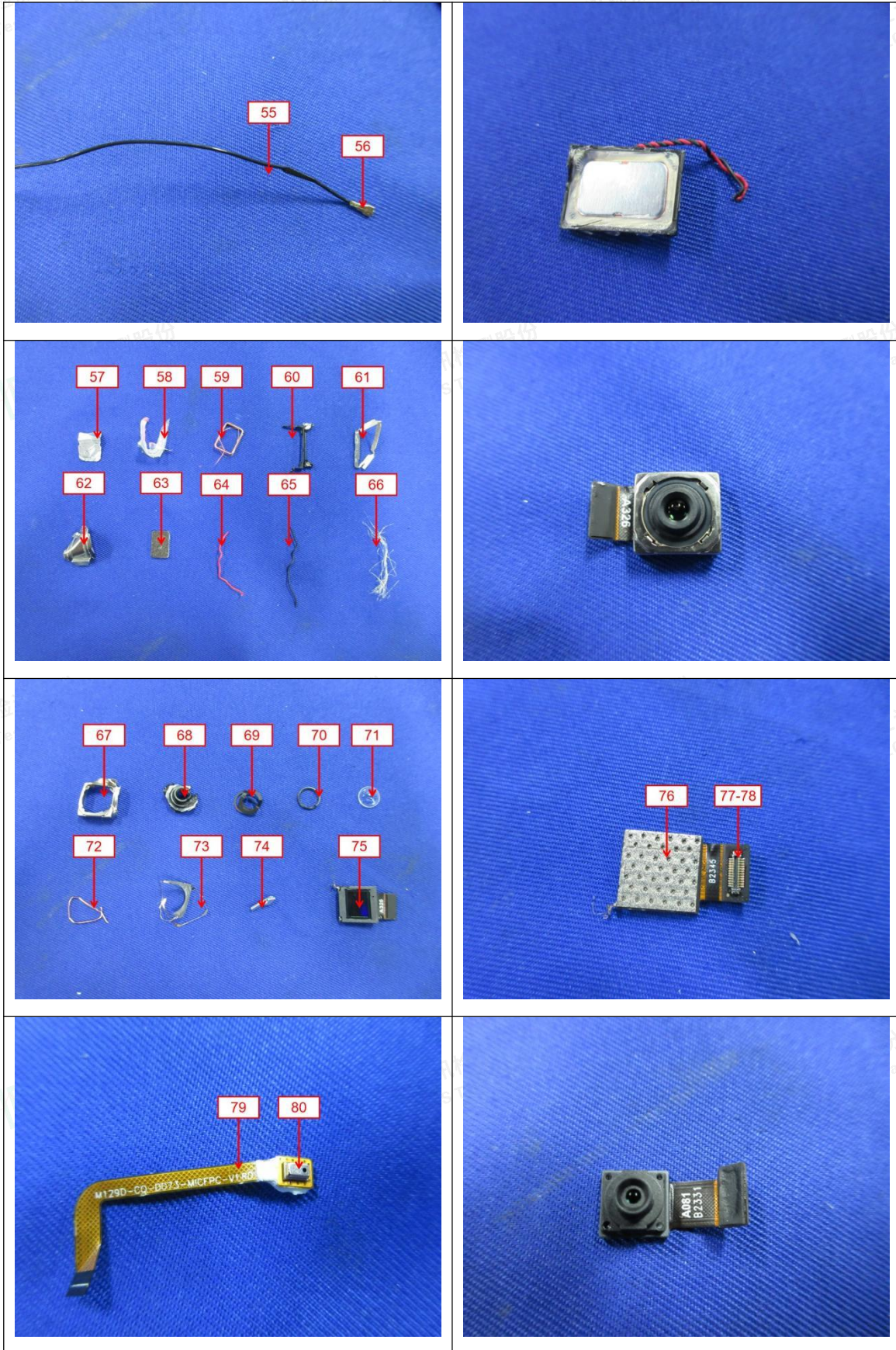


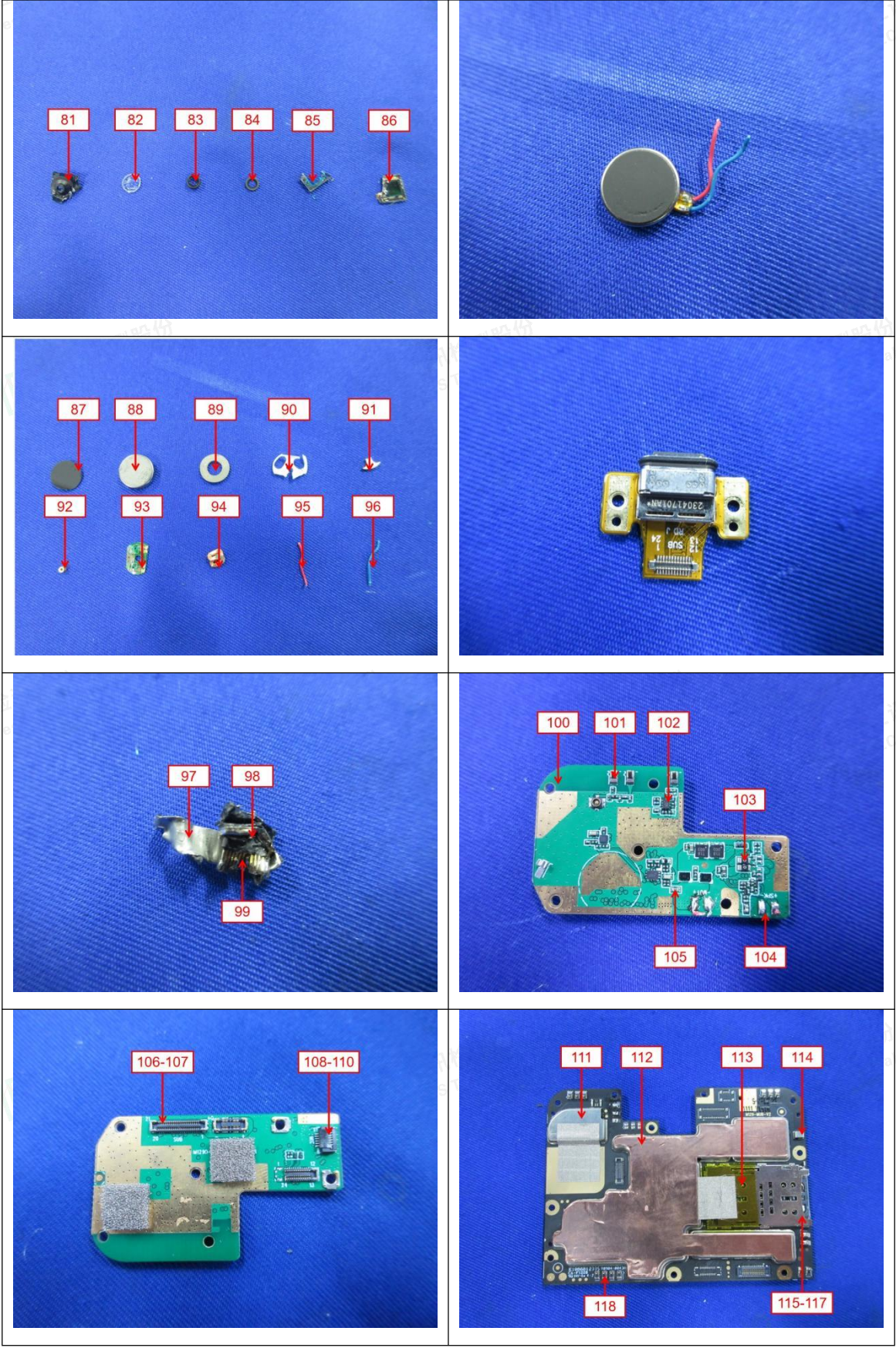
The photo(s) of the sample

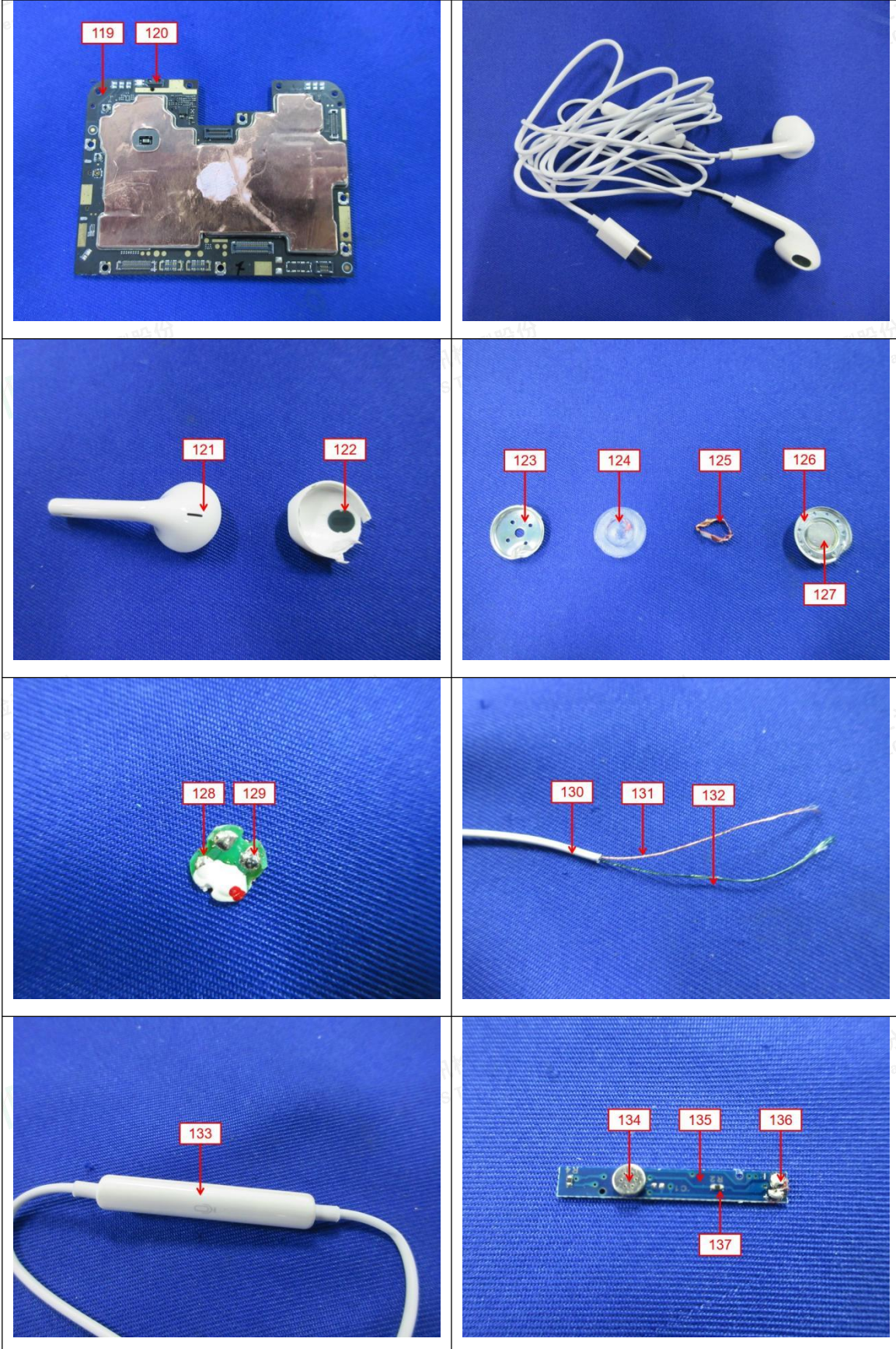


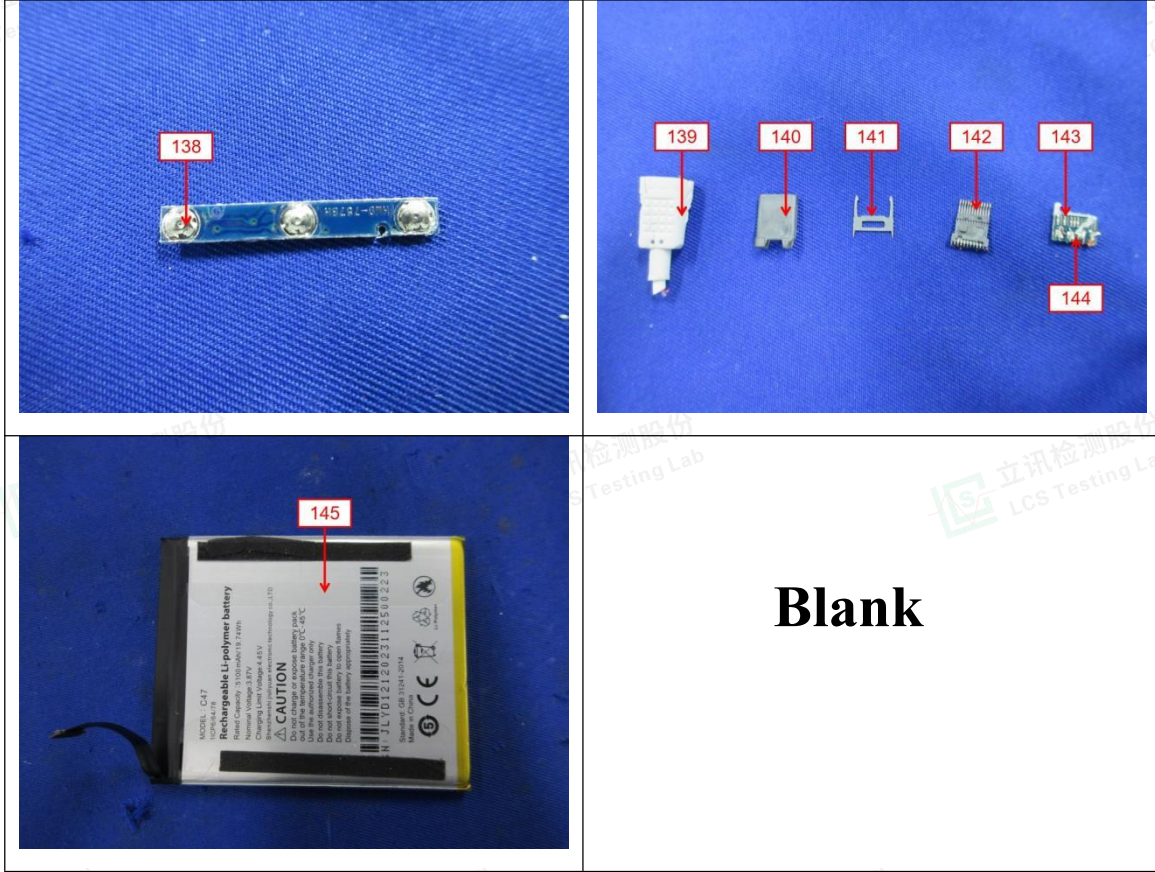












Statement:

1. The test report is invalid without the signature of the approver and the special seal for the company's report;
2. The company name, address and sample information shown on the report were provided by the applicant who should be responsible for the authenticity which are not verified by LCS;
3. The test results in this report are only responsible for the tested samples;
4. Without written approval of LCS, this report can't be reproduced except in full;
5. In case of any discrepancy between the corresponding Chinese and English contents in the test report, the Chinese version shall prevail.

*** End of Report ***

